



MONTHLY MEMBERSHIP PROGRESS REPORT

District 5M 5

Results as of: 5/31/2017

GMT: Judy Hankom

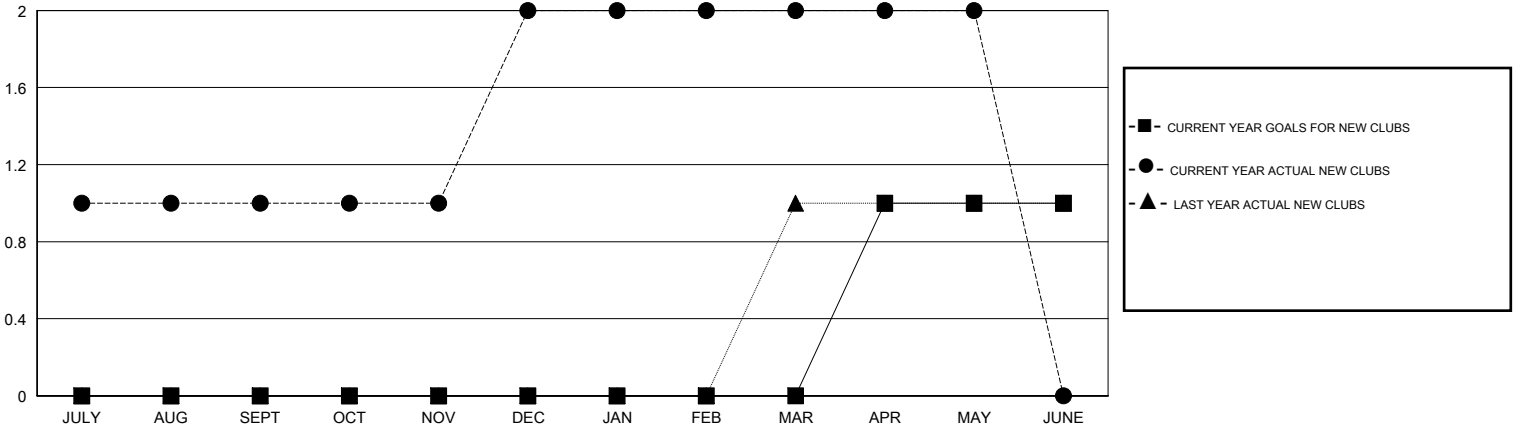
LOCATION MINNESOTA

GMT CA

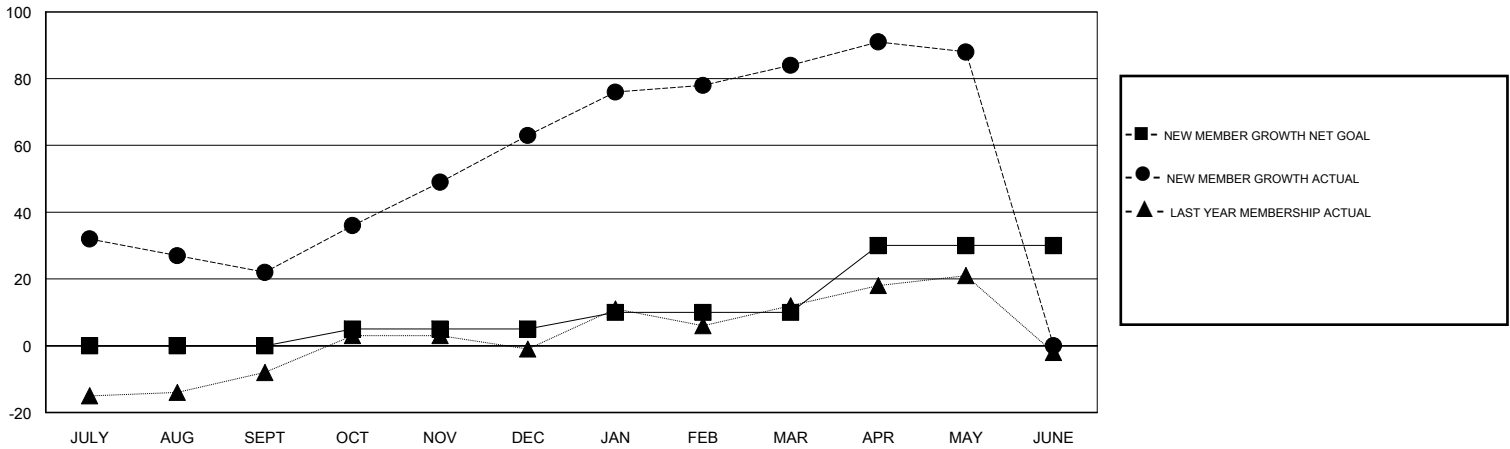
Clubs			
RESULTS FOR 2016-2017			
QUARTER	NEW CLUB GOAL	NEW CLUBS	DROPPED CLUBS
JULY/AUG/SEPT	0	1	0
OCT/NOV/DEC	0	1	2
JAN/FEB/MAR	0	0	0
APR/MAY/JUNE	1	0	0

Members			
RESULTS FOR 2016-2017			
QUARTER	NEW MEMBER GROWTH NET GOAL (not reinstated or transfers)	NEW MEMBER GROWTH ACTUAL (not reinstated or transfers)	DROPPED MEMBERS ACTUAL (including transfers)
JULY/AUG/SEPT	0	55	33
OCT/NOV/DEC	5	69	28
JAN/FEB/MAR	5	38	17
APR/MAY/JUNE	20	24	20

GOALS AND ACTUAL NEW CLUBS CUMULATIVE



GOALS AND ACTUAL MEMBERS CUMULATIVE



DROPPED CLUBS: 2	34 CLUBS OF 43 ADDED 1 OR MORE NEW MEMBERS	GENDER DISTRIBUTION
DROPPED MEMBERS	CLICK HERE FOR CUMULATIVE MEMBERSHIP DATA	MALE 1,074 (72.57%)
DECEASED 15		FEMALE 406 (27.43%)
CLUB CANCELLED 3		TOTAL FAMILY UNIT MEMBERS 223
OTHER 80		FAMILY MEMBERS PAYING HALF DUES 113
TOTAL 98		